

As requested, please find below sample of the projects and services that I had contributed to that involved combination of BIM workflows and the relevant tender and construction processes:

**1. PIF Amaala PROJECT - Design & Construction of Camps-Saudi Arabia (Tender)**

**BIM Scope of Services:**

- Develop and Design of a Camp hosting 5100 persons
- Preliminary BIM Development
- BIM based 2D Extraction of General Arrangement drawings (such as planes, Elevations, Sections, Schedule of spaces and Material take-off reports / schedule of quantities
- Develop Marketing 3D/BIM based marketing material (high quality rendered Images & Animations).

**Key Figures**

- Project Value: USD 200 million
- Total No. Of BIM Engineers = 5



## 2. Hatta Pumped Storage Hydro Power Plant (Tender)

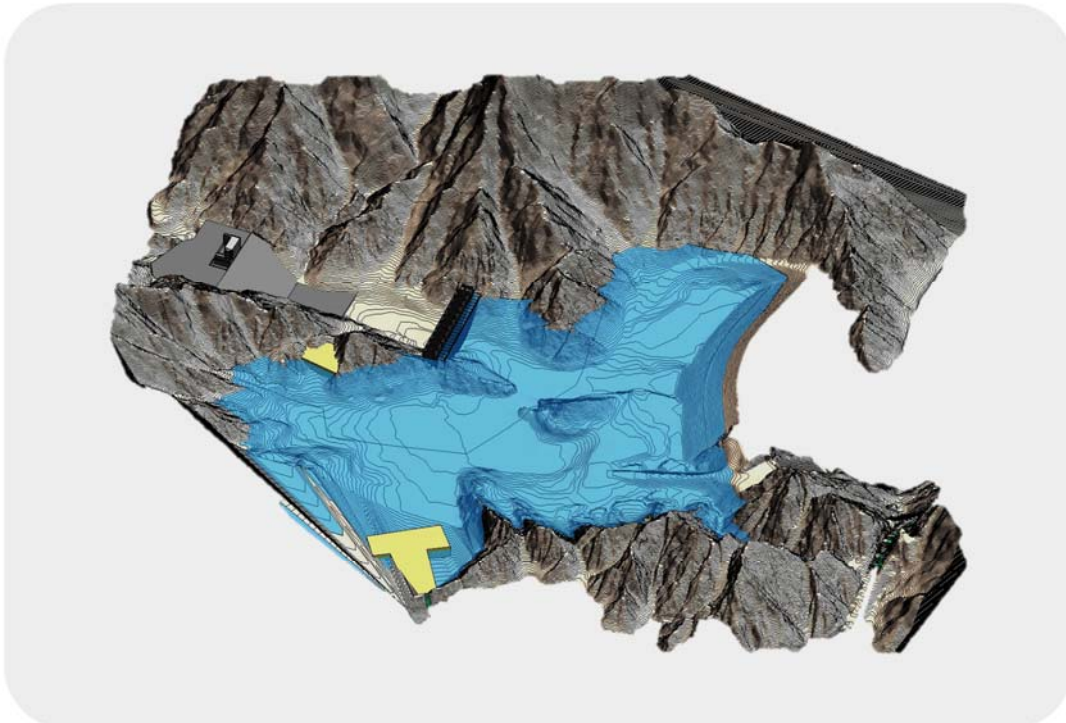
- Construct a hydraulic power house, relevant marine works, Dams and temporary and permanent roads

### BIM Scope of Services:

- Developing 3D BIM designs
- Extract Excavation Material Take-off reports based on a 3D Earthworks BIM design
- Develop Marketing 3D/BIM based marketing material (high quality rendered Images)
- Develop 3D/BIM based Construction Method Statement
- Presentation of the construction sequence of the temporary cofferdam produced using a BIM design developed using Revit

### Key Figures

- Project Value: Around USD 500 Million
- Built up Area: 80000m<sup>2</sup>
- Duration for 54 months
- Total BIM Engineers = 5



### **3. EMAAR Square-Cairo, Egypt(Tender)**

#### **SCOPE OF WORK**

Emaar Square Project has a total site area of 242,406 square meters and a total built up area of about 1.6 million square meters.

The project scope includes Structural, Finishes and MEP works for the following structures:

1. Parking
2. Podium
3. Utility Floor
3. Two Elite Towers
3. Two Mid-rise Buildings
4. One Office towers
5. Two Town House
6. External Works

#### **BIM Scope of Services**

- Develop BIM based Construction Method Statement for the structural scope
- Develop a 4D simulation for the construction sequence (integrating BIM with the construction schedule developed on Primavera)
- Extract Material Take-off reports from the tender BIM design

#### **Key Figures**

- Project Value = USD 650 Million
- Total No of BIM Engineers = 8



#### 4. Little Italy - Kazan - Russia(Tender)

##### BIM Scope of Services

- Producing 3D models for the concept design
- Extracting planes, Elevations, Sections
- Extracting Area Schedules and BIM based Material Take-off Quantities

##### Key Figures

- Total Built-up Area including parking = 200,000.00m<sup>2</sup>
- Total No of BIM Engineers = 4



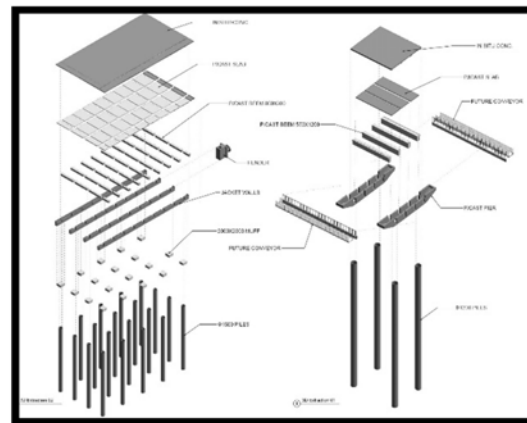
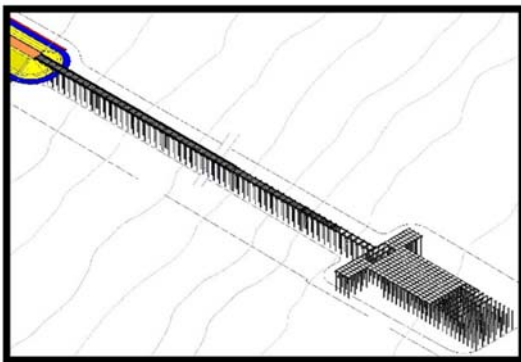
## 5. Jetty at Khatmat Mallah - Oman(Tender)

### BIM Scope of Services:

- Develop Marketing 3D/BIM based marketing material (high quality rendered Images)
- Develop 3D/BIM based Construction Method Statement
- Presentation of the construction sequence of the temporary cofferdam produced using a BIM design developed using Revit
- Extract Excavation Material Take-off reports based on a 3D Earthworks BIM design

### Key Figures

- Total No. of BIM Engineers = 3



## 6. JAHEZIYA DEVELOPMENT PROGRAMME - Abou Dahbi(Tender)

### BIM Scope of Service

- Develop Marketing 3D/BIM based marketing material (high quality rendered Images)
- Develop 3D/BIM based Construction Method Statement
- Presentation of the construction sequence of the temporary cofferdam produced using a BIM design developed using Revit
- Extract Excavation Material Take-off reports based on a 3D Earthworks BIM design



## 7. Camp Mozambique LNG(Tender)

### BIM Scope of Services:

- Develop and Design of a Camp hosting 2500 persons
- Preliminary BIM Development
- BIM based 2D Extraction of General Arrangement drawings (such as planes, Elevations, Sections, Schedule of spaces and Material take-off reports / schedule of quantities
- Develop Marketing 3D/BIM based marketing material (high quality rendered Images & Animations).

### Key Figures

- Project Value: USD 300 million
- Total No. of BIM Engineers = 4



## 8. OBHUR CREEK MAIN BRIDGE(Tender)

### Project overview

- Location: Jeddah - Saudi Arabia

### BIM Scope of Service

Creating a 3D BIM Design to extract:

- a) Quantity Take-off Reports
- b) Method of construction
- c) construction drawings

### Key Figures

- Total No. of BIM Engineers = 6





## 9. Sunway Parcel-F Project – Malaysia

### Project overview

- Government office building
- 11 Office Towers including Podium & Parking Areas

### BIM Scope of Services:

- Extraction of Material Take-off Reports
- Develop project BOQ using CSI standards
- Develop Construction BIM designs
- Develop 4D simulations
- Develop BIM based Progress reports and Cost Monitoring
- Design Coordination & Clash Detection
- Develop Marketing 3D/BIM based marketing material (high quality rendered Images & Animations).
- BIM based 2D Extraction of General Arrangement drawings (such as planes, Elevations, Sections)
- Key Figures
  - Project Value: 450 Million
  - Built up Area: 434000m<sup>2</sup>
  - Total No. of BIM Engineers = 25



**Conducting training using Autodesk BIM Solutions for:**

- **The Engineering Department in CCC**
- **The BIM Engineers at the Musheireb Project - Qatar (Qatar Metro)**
- **The BIM Engineers at the sidra medical and research center - Qatar**

Many regards

***Hani Elsafadi***

Senior Design Engineer - Architectural / Senior BIM Coordinator

Tel/ Mob: +30 693 6820887 / Email: [Elsafadihani@gmail.com](mailto:Elsafadihani@gmail.com) /

LinkedIn: <https://www.linkedin.com/in/hani-elsafadi-275a6462/>